

- Design selection screen
- Design Information
- i-TM mode Auto / Manual
- To return / advance the frame
- Manual Color Change
- Manual Operation

Speed switching

- Low speed
- Medium speed
- High speed (Pressing continuously)



- Return to the main screen
- USB memory screen
- Data Edit
- Needle Bar Selection
- Design Data Conversion

- Changing maximum r.p.m.
- Parameter setting
- To close the folder
- To return to the main page
- Page switching
- Reordering of designs
- Data Set

## BASIC OPERATION

For operation details, refer to the user's manual.  
Contents of display differ depending on model.

### 1 Reading Design (Data Input)

Set the USB memory

Reading the design

Select the destination folder

### 2 Preparation of Embroidering (Data set)

When the start position has been set

Select the design to be embroidered

### 3 Needle Bar Selection

Select the needle step

Select needle bar

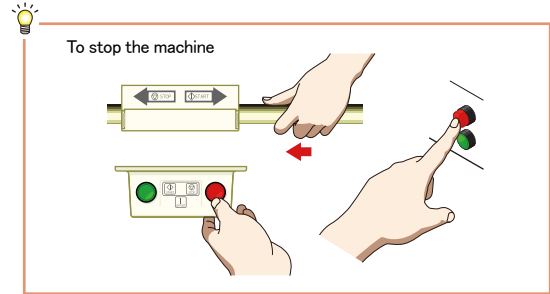
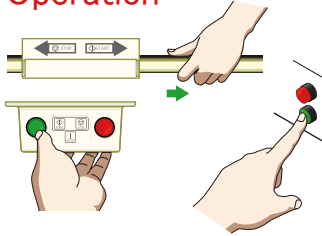
## 4 Trace



Select high speed/low speed

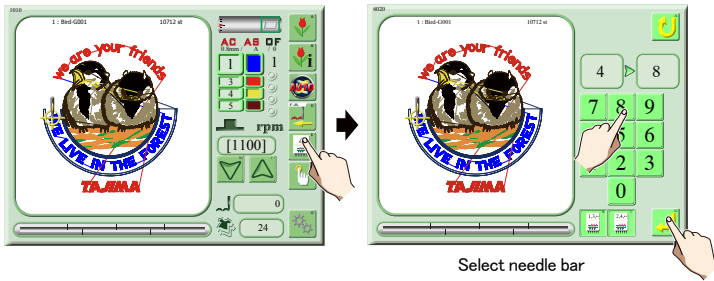
When the design data does not fit into the embroidery space by performing Trace confirmation, change the start position.

## 5 Start Operation



To stop the machine

## A Manual Color Change



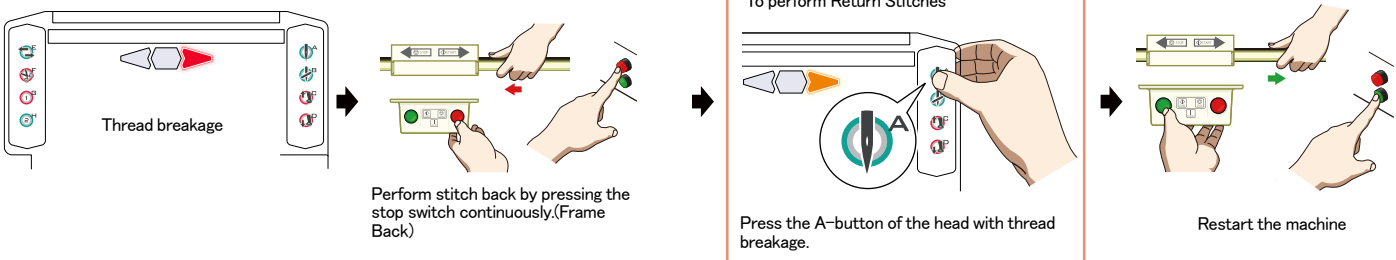
Select needle bar

## B Presser Foot Setting



Set the presser foot lower dead point

## C Repair Stitches



To perform Return Stitches

Press the A-button of the head with thread breakage.

Restart the machine

## D Direct Command Switch

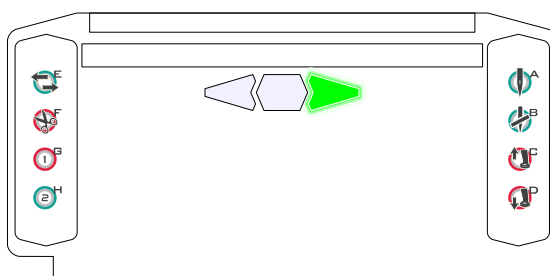
Switching between Frame Back/Frame Forward



Thread trimming (Pressing longer)



Selected function



Setting of Repair Stitches and Return Stitches  
Operate a suspended head



Suspend the head



Presser foot Up



Presser foot Down

For operation details, refer to the user's manual.