

Design selection screen



Design Information



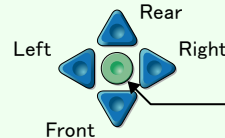
To return / advance the frame



Manual Color Change



Manual Operation



Speed switching

- Low speed
- Medium speed
- High speed (Pressing continuously)



Changing maximum r.p.m.



Parameter setting



Return to the main screen



USB memory screen



Data Edit



Needle Bar Selection



Design Data Conversion



To close the folder



To return to the main page



Page switching



Reordering of designs



Data Set

BASIC OPERATION

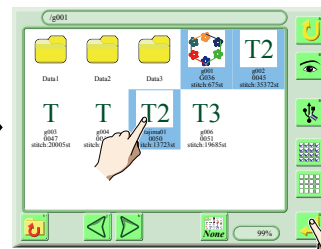
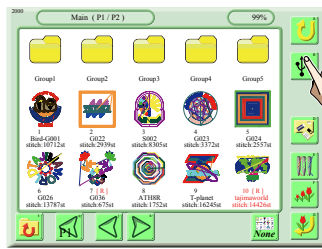
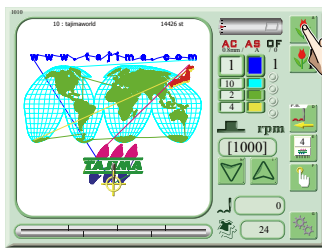


For operation details, refer to the user's manual.
Contents of display differ depending on model.

1 Reading Design (Data Input)



Set the USB memory



Reading the design

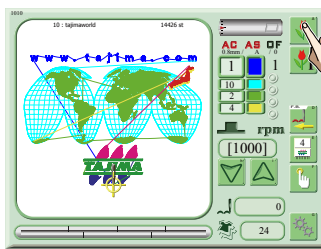


Select the destination folder

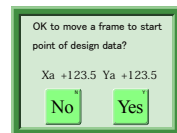
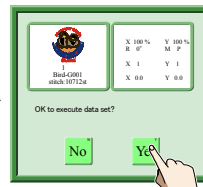
2 Preparation of Embroidering (Data set)



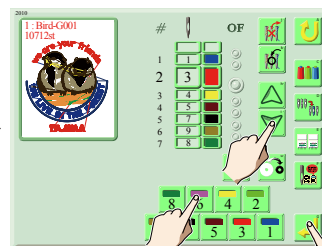
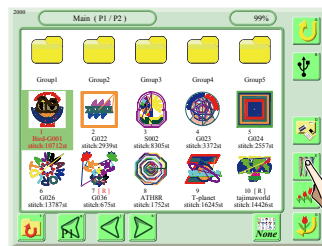
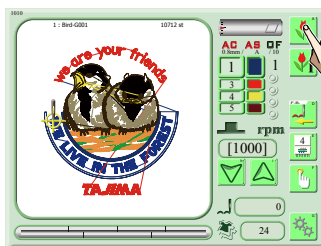
When the start position has been set



Select the design to be embroidered



3 Needle Bar Selection



Select the needle step



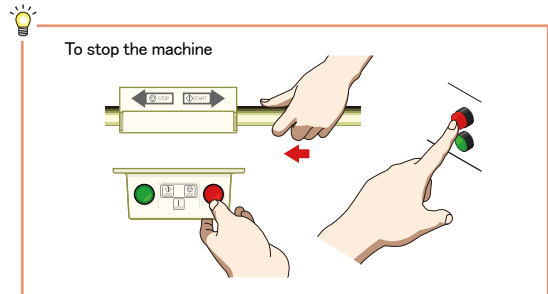
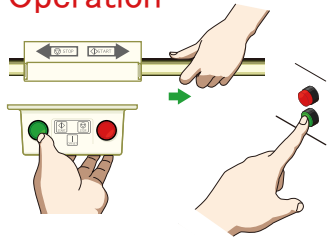
Select needle bar

4 Trace

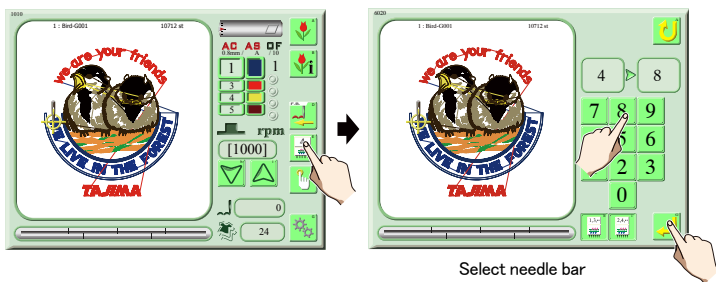


When the design data does not fit into the embroidery space by performing Trace confirmation, change the start position.

5 Start Operation



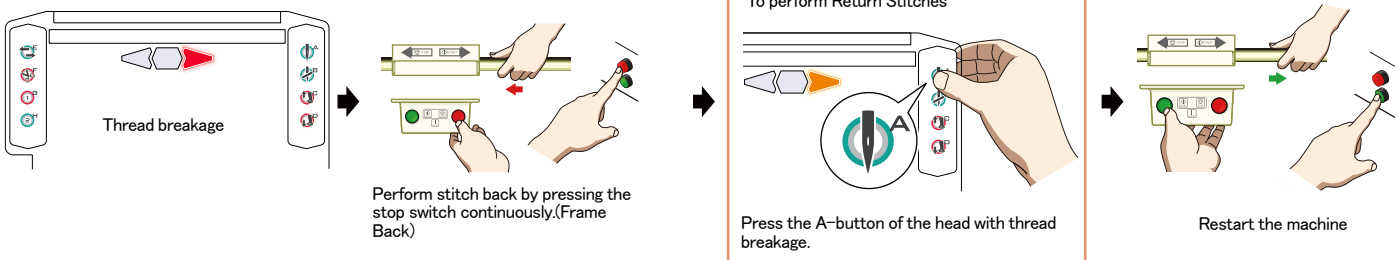
A Manual Color Change



B Presser Foot Setting (TMAR, TMCR)



C Repair Stitches



D Direct Command Switch

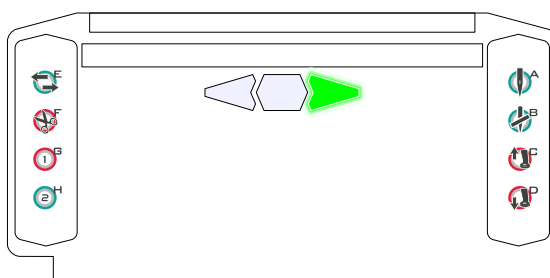
Switching between Frame Back/Frame Forward



Thread trimming (Pressing longer)



Selected function



Setting of Repair Stitches and Return Stitches
Operate a suspended head



Suspend the head



Presser foot Up (TMAR, TMCR)



Presser foot Down (TMAR, TMCR)

For operation details, refer to the user's manual.