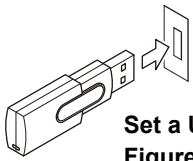
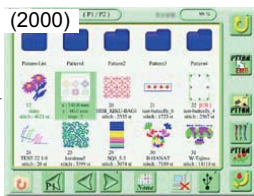
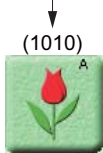


Basic operation for HAR, PAX, and PAR

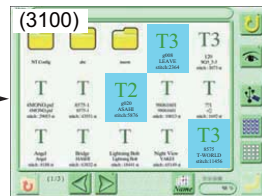
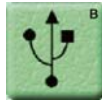
A Saving a design in a USB memory into the machine memory



Set a USB memory.
Figures in () shows the screen number at the left top of the screen.



Select a design.
It is possible to select plural designs.



Select a destination to save.



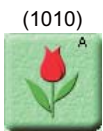
Saving is completed.



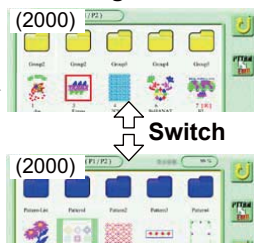
When you embroider this design after that, proceed to (2000) of the operation **B**.

- Folder for embroidering mode
- Folder for sewing mode

B Deciding a design to be sewed



Embroidering mode/Sewing mode



Switch

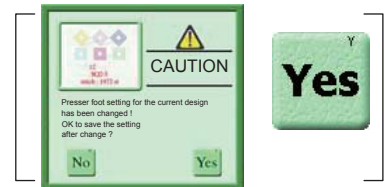


(Example)

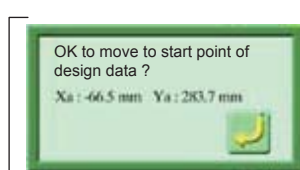
Select a design to be sewed.



Sewing mode screen



For details, refer to the user's manual of the machine.



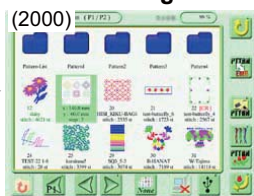
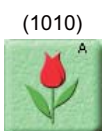
Start the machine.

The above illustration shows the message when you select a design to be sewed.

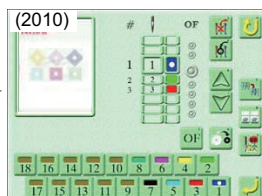
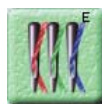
C Deciding an order of needle bars to use

(Example)

Select a design to be sewed.



Sewing mode screen



Select a step.



Select a needle bar.



D Executing of trace



E Changing color manually



F Trimming a thread manually



Functions that must be used practically

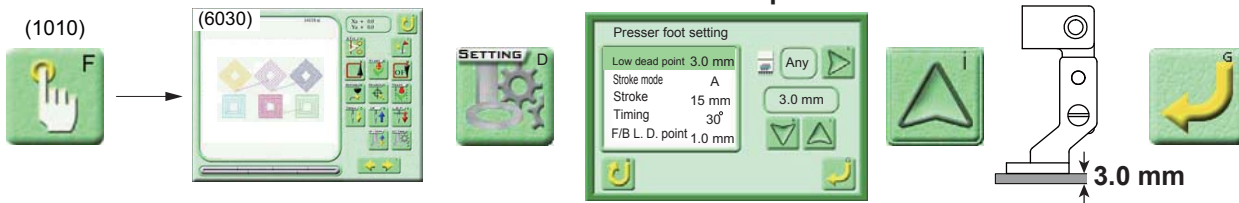
A Raising or lowering of the presser foot

Moving up/down the presser foot at all heads in a batch



B Adjusting the presser foot lower dead point to the fabric to use

(Example)
Lower dead point : 3.0mm



For details, refer to the manual of the machine.

C Performing Condensation Sewing with making stitch length small



For details, refer to the manual of the machine.